



Data Performance & Partnership

MADSEC Fall Conference

October 26 & 27, 2009



Partnership Participants

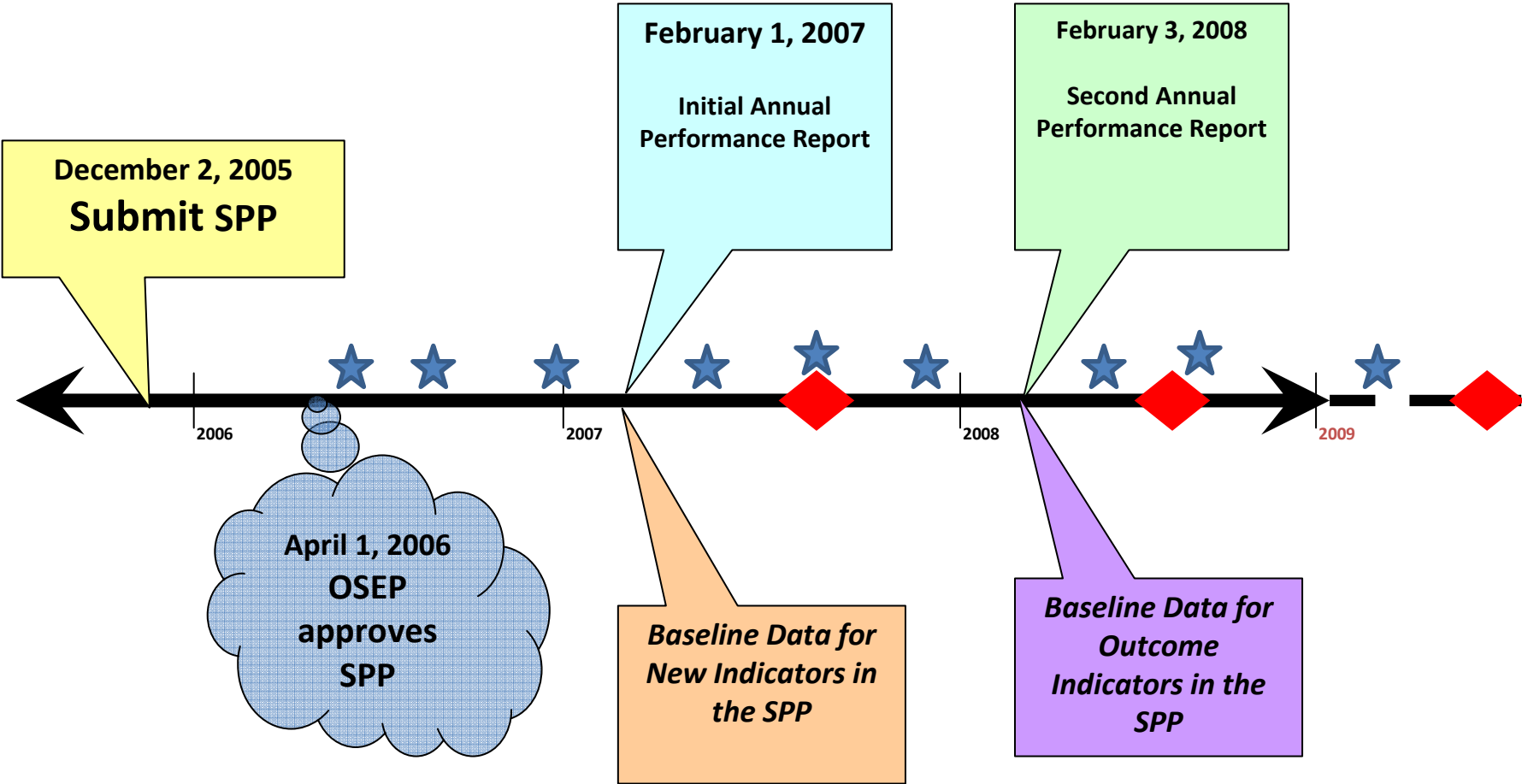
- Barbara Dee
- Patrick Moore
- Jill Adams
- Dana Duncan (DOE)
- Dorothy Marecaux
- Susanna Liller (facilitator)
- Beverly Mattson (RMC)
- Kate Kressley (RMC)
- Murray Shulman
- Deb Hannigan
- Jana Gregory
- Jeff Porter
- Laurie Lemieux
- Deb Scheibel (DOE)
- Doug Carville (HS Principal)
- Nora Murray (Asst Supt)
- Dorrell Spence (Lewiston, data)
- Donna Madore
- Mary Guerrette
- Sharon Brady
- Will Burrow
- Renee Karickhoff (DOE)
- David Stockford (DOE)

Historical Perspective

Authorization of IDEA to the Present



The Long Timeline



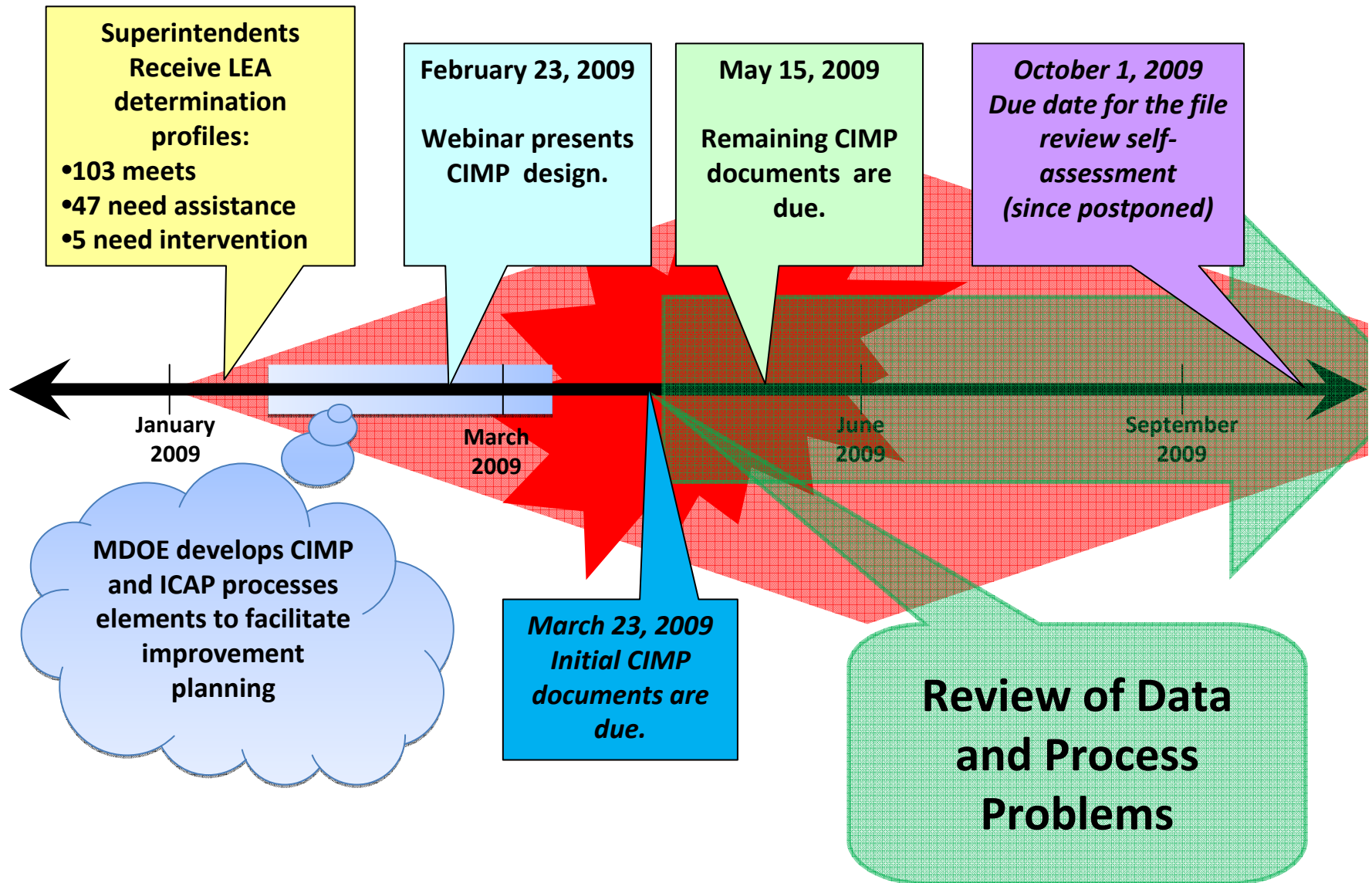
◆ **OSEP Determination Letters**

★ **Technical Assistance Presentations**

Third Year at Needs Assistance

- **Action was required**; technical assistance was the minimum requirement
- Determination response team developed a rubric and began building improvement tools
- Profiles were constructed for each LEA
- Training approaches were developed
- Letters were prepared....

More Recently



Data and Performance Partnership

- Evolved out of the data and process concerns discovered during the CIMP implementation
 - Data were wrong and misused
 - CIMP process timing and emphasis were problems
- Initially focused on problems caused by timing and data inadequacies
- Shifted to concentrate on **how** to gain improvements together
- Continuing work to refine data and process mechanisms

Expected Outcomes

- Data definitions that are shared, common and produce unquestionable data
- Analysis and reporting design and content useful to MDOE and SAU personnel
- Continuous improvement activities and monitoring aligned with Federal requirements AND school system needs
- Indicator performance improvement

January 2009

The Arrival of the CIMP (CHIMP)



Development of the Data & Performance Partnership

- January 2009: CIMP Process Starts
- February and 2009: Frustration mounts in the field
 - Calls to Jill from Special Education Administrators
 - Calls to DOE from Superintendents and Special Ed Administrators and MADSEC

Development of the Data & Performance Partnership

- March 17 2009: MDOE, Special & Regular Ed meet to discuss two critical issues
 1. Data collection, analysis, and interpretation, inaccuracy, age of data, and incomplete data
 2. Lack of clarity of the process resulting in misconceptions, mixed messages, misunderstandings of the CIMP process

Development of the Data & Performance Partnership

- March 17 2009 Outcomes:

CIMP Data Stakeholders Group Assembled to work collaboratively with MDOE and Special Education Administrators to make the CIMP Process productive and meaningful process that results in improved outcomes for students throughout the state

Development of the Data & Performance Partnership

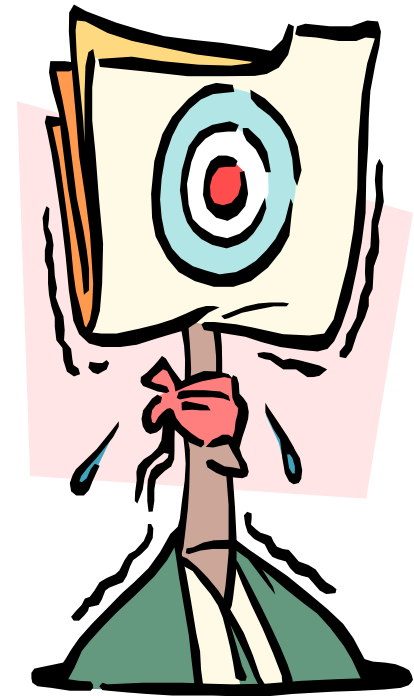
- April 21, 2009: CIMP Stakeholders work session
- May 8, 2009: CIMP Stakeholders met with Jaci Holmes who recognizes the need for this group to meet frequently and set the process in motion

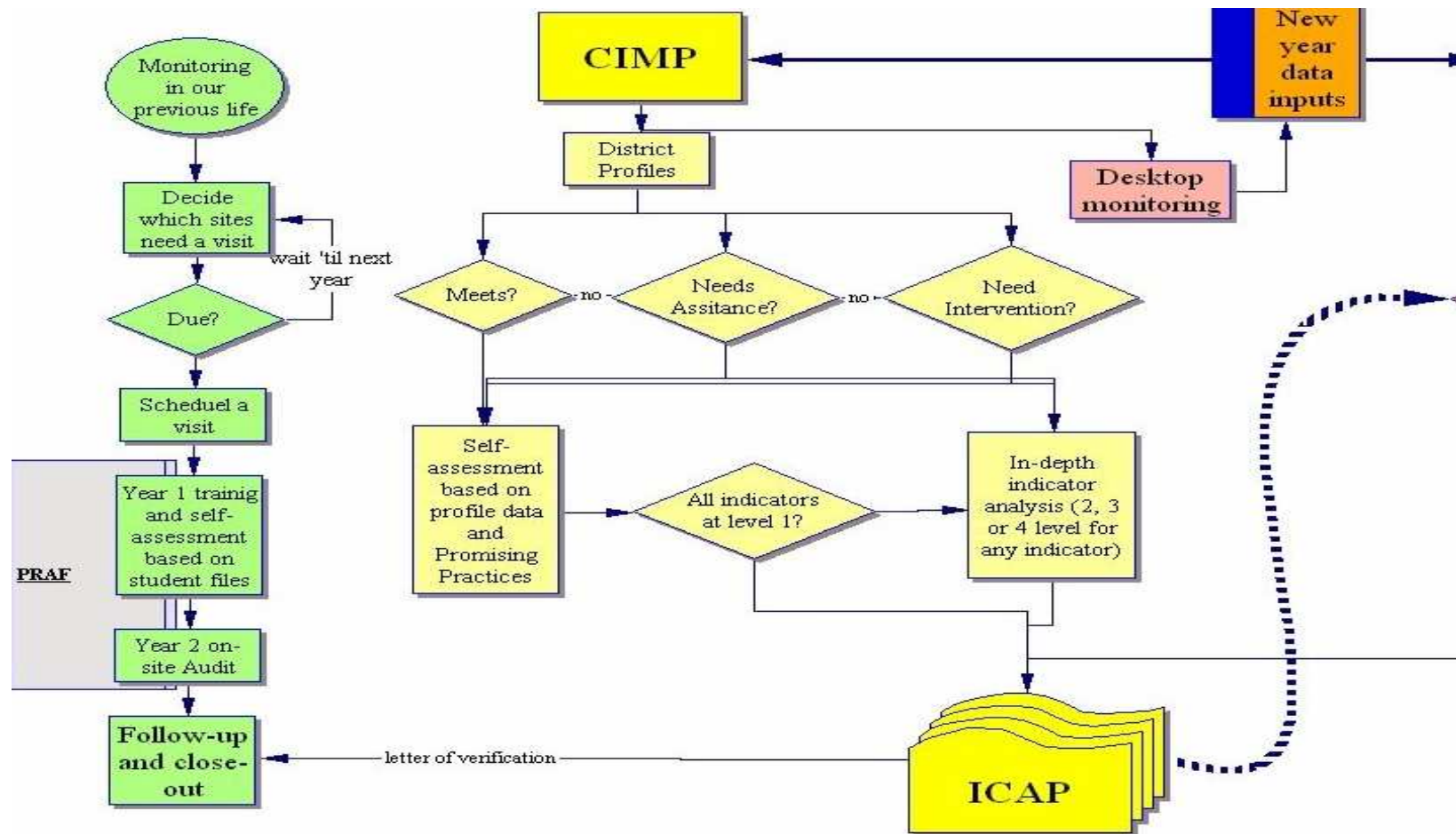
Development of the Data & Performance Partnership

- August 21, 2009: CIMP Stakeholders Group meets
- August 27, 2009: CIMP Stakeholders Group meets and agrees to form Data and Performance Partnership
- September 25, 2009: Data and Performance Partnership
- November 13, 2009: Next Data and Performance Partnership

Systems Perspective

- Federal Pressures
- State Requirements & Response
- Local Implications & Impact





General Supervision System Flow Chart

Results & Recommendations

Next Steps



Questions?



Contact Information

Jill Adams, MADSEC

jadams@madsec.org

Renee Karickhoff, MDOE

renee.karickhoff@maine.gov

Debrajean Scheibel, MDOE

Debrajean.scheibel@maine.gov

Dana Duncan

dana.duncan@maine.gov